

Gettysburg Area School District

2015-16

**Budget Related
FAST FACTS**

May 14, 2015

FACT: GASD Budget Supports:

- Grade K-12 students in five GASD buildings (academic, behavioral, health and developmentally-appropriate activities)
- Students in Vida and Montessori Charter Schools in the GASD
- Students in Cyber/Charter schools outside the GASD
- Students in the GASD VLN cyber school
- Level 1 + Level 2 students in the Adams County Tech Prep Programs (Bermudian Springs, Conewago Valley, Fairfield, Littlestown and GASD)



FACT: GASD Budget Supports:

- Students in non-public schools – transportation (Adams County Christian Academy, St. Francis Xavier School, Delone, Freedom Christian, Mother Seton (Emmitsburg, MD))
- Students in non-public schools – Health and Dental Services (ACCA, SFX, Freedom Christian)
- Students in non-public schools – Title I Reading Services
- Students in Adams County Prison



GASD Students Are Career & College Ready

- **Career Ready...one indicator:**

Students completing Career & Tech Programs are assessed with written & performance exams by NOCTI (National Occupational Competency Testing Institute) in these areas:

- Building Construction Occupations
- Child Care and Support Services
- Criminal Justice
- Culinary Arts
- Diesel Technology
- Health Assisting
- Horticulture-Landscaping
- Pre-Engineering/Engineering Technology
- Television Production
- Visual Communications and Multimedia Design

- 94% of students scored at the Advanced or Competent Levels and earned the Pennsylvania Skills Certificates and/or Certificate of Competency
- 71% earned college credit, too



GASD Students Are Career & College Ready

College Ready...one indicator:

Advanced Placement Participation
(Administered by the College Board)

Calculus AB
Calculus BC
Computer Science
English Literature
Environmental Science
German Language
Physics
Statistics
Studio Art/2-D
Studio Art/3-D
US Government & Politics
US History
World History

- **355 AP Exams taken by 202 different students**
- **225 AP Exams received a score of 3 or better – and qualify for college credit**
- **128 different students had a least one AP Exam score 3 or better**



FACT – GASD has significantly reduced the tax impact from the 2015-16 Preliminary Budget in January to the Proposed Budget in May

Tax Millage Impact - Proposed Budget – May 2015

The increase in school real estate tax for the owner of an average home in GASD, assessed value of \$250,983, will be \$24.24 or about \$2 a month. The proposed millage increase is 0.0966 mills or 0.921% -- less than half the 1.9% Act 1 Index.

Tax Millage Impact - Preliminary Budget – January 2015

The increase in school real estate tax for the owner of an average home in GASD, assessed value of \$250,983, would have been \$84.33 or about \$7 a month. The millage increase would have been 0.3360 mills or 3.205% -- more than the 1.9% Act 1 Index. Thus, the tax impact has been reduced by over 70% since January.



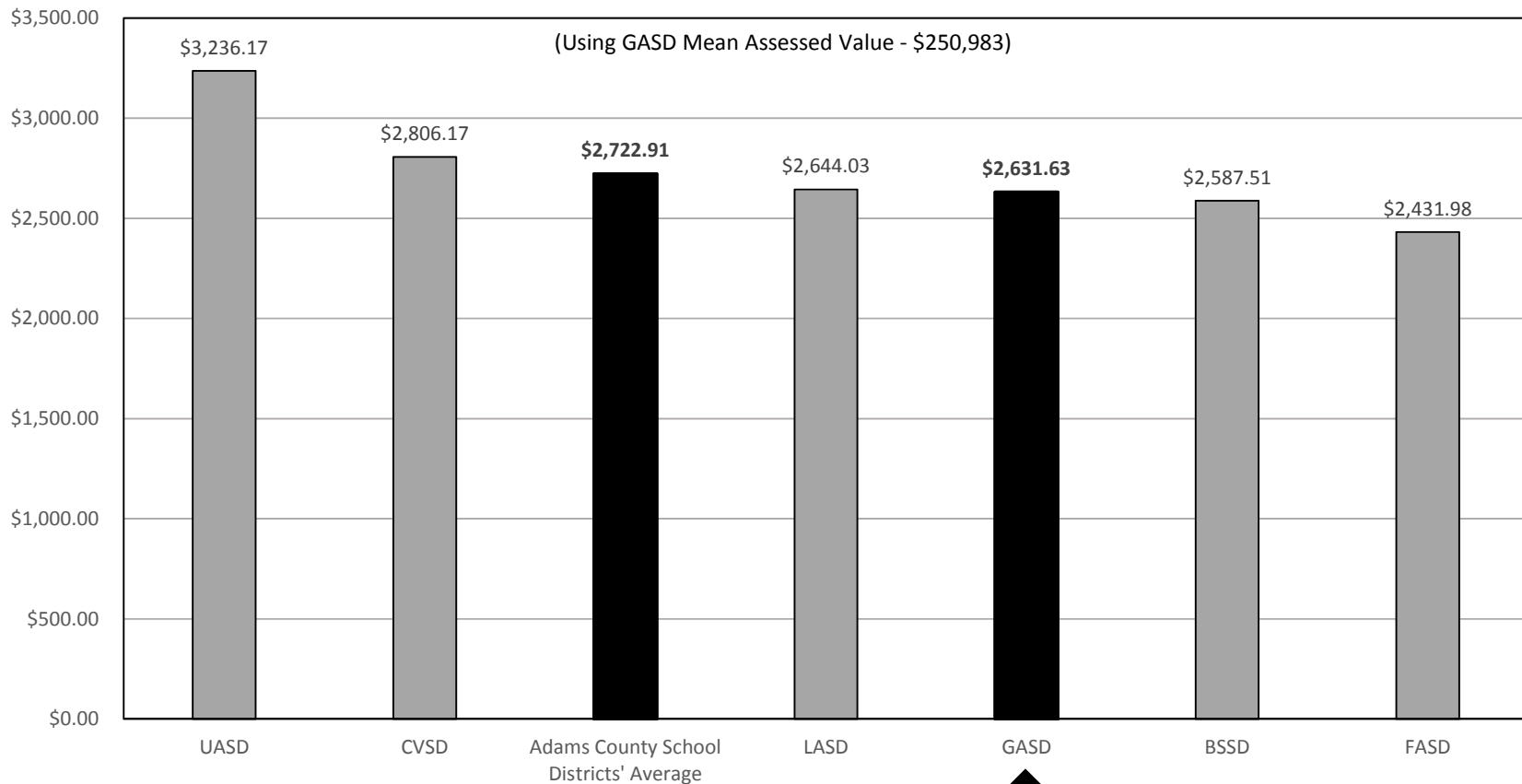
FACT – Of the 6 Adams County School Districts, GASD has the lowest cumulative tax rate increase over the past 3 years – less than half the county average

Per PDE School District Data and Statistics Reports					
May 11, 2015					
<u>Change</u>	<u>12/13</u>	<u>13/14</u>	<u>14/15</u>		Cum Change B
BSSD	2.30%	1.15%	2.00%		8.29%
CVSD	2.20%	4.92%	4.37%		16.37%
FASD	2.10%	2.10%	0.00%		4.24%
GASD	1.20%	0.00%	1.73%		3.90%
LASD	2.20%	2.20%	2.70%		9.95%
UASD	2.27%	2.30%	3.70%		11.31%
Average	2.05%	2.11%	2.42%		9.01%



FACT – Of the 6 Adams County School Districts, GASD 2014-15 tax bills were 3rd lowest.

2014-15 Adams County School Districts' Tax Bill Comparison



FACT – GASD current debt will be paid off in less than 12 years, tax rates to pay for all current debt have been in place since 2011 and no tax increases are needed to pay off current debt

FACT - There will not be any current debt left to pay when next year's GASD Kindergarten Class of 2027 graduates from High School.

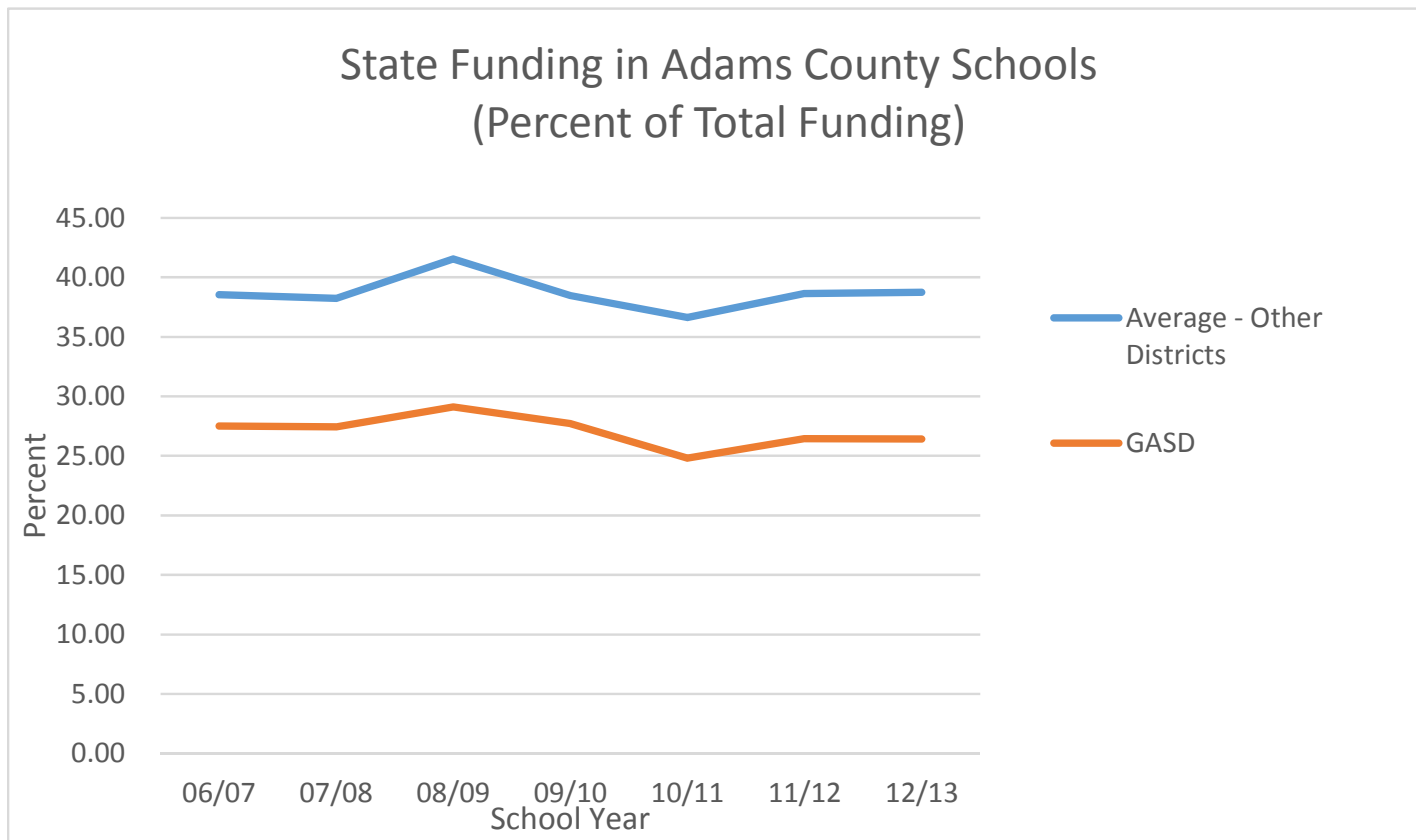


FACT – According to NerdWallet.com, GASD scores higher on academics as compared to other local school districts

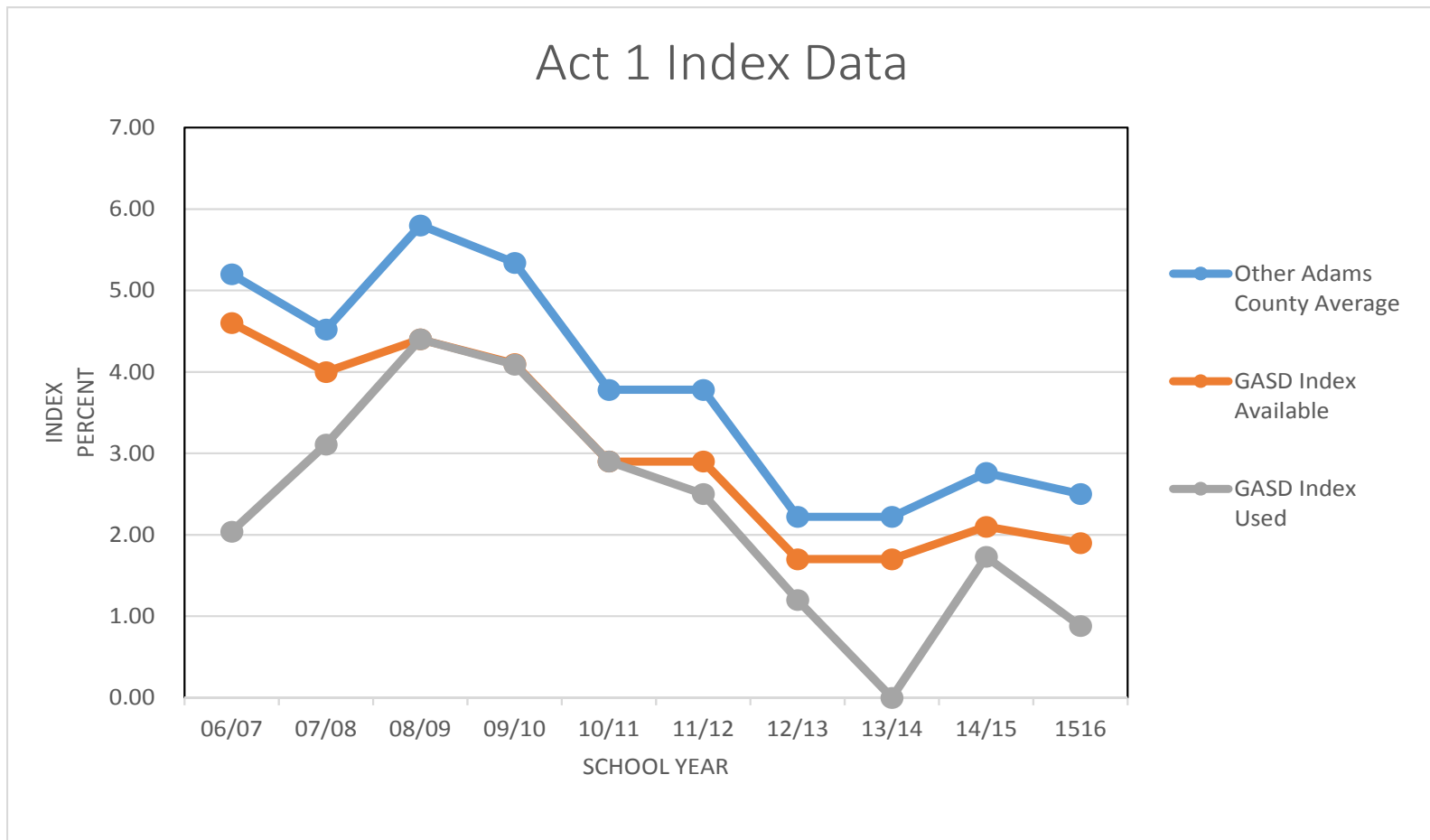
NerdWallet.com PA School Data					
April 13, 2015					
School District	SAT Average	PSSA Advanced Scores	Graduates in Higher Ed	Graduation Rate	NerdWallet Bang For Your Buck Rating
Gettysburg Area	1525	51.5	68.85	88.85	68.51
Ave. Other Adams County Schools	1447	40.8	61.53	89.05	64.15
Per NerdWallet.com this data is from PA Department of Education					
SAT data from 2013					
PSSA data from 2012					



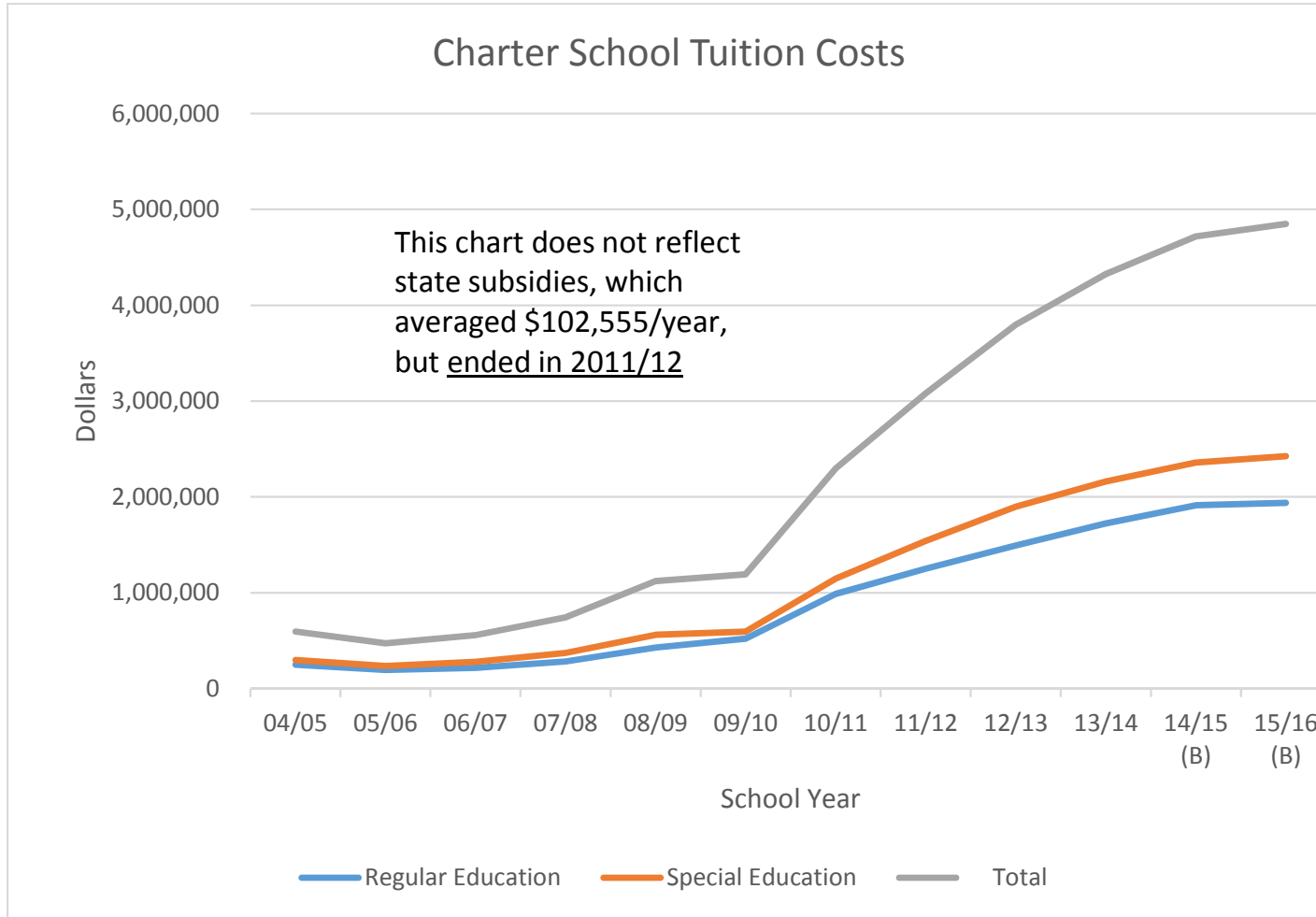
FACT – GASD receives a lower percentage of funding from the Commonwealth, based on its measure of the District taxpayers’ ability to pay. GASD’s funding from the Commonwealth is 30% below the average of the other Adams County school districts.



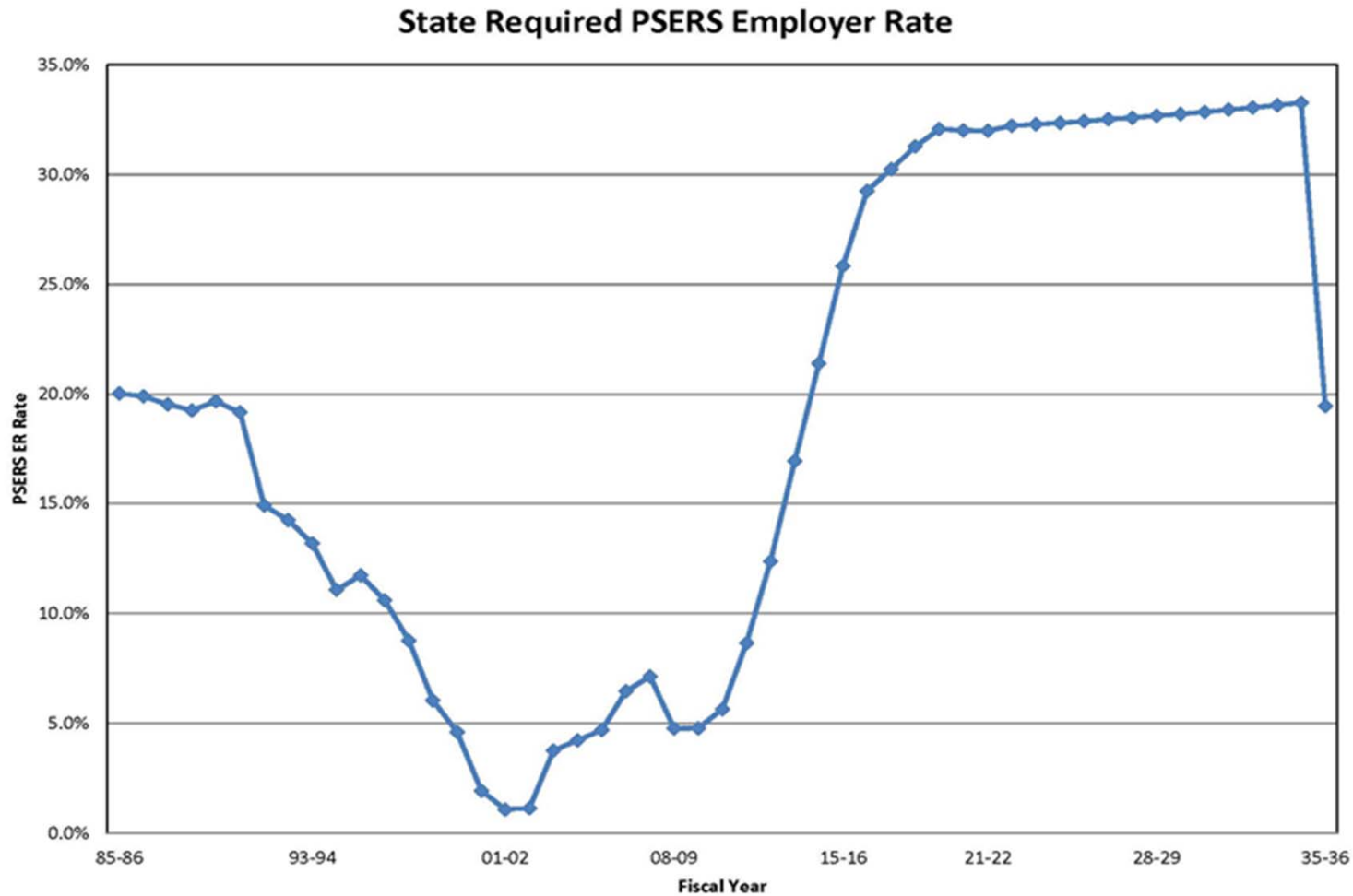
FACT – EVEN WITH LESS STATE SUPPORT, GASD has used less than its available Act 1 Index in 8 of the 10 years Act 1 has been in place.



FACT – GASD state mandated charter school payments continue to climb each year



FACT – GASD’s PSERS Mandated Employer Contribution Rate increases every year until 2035-36



FACT:

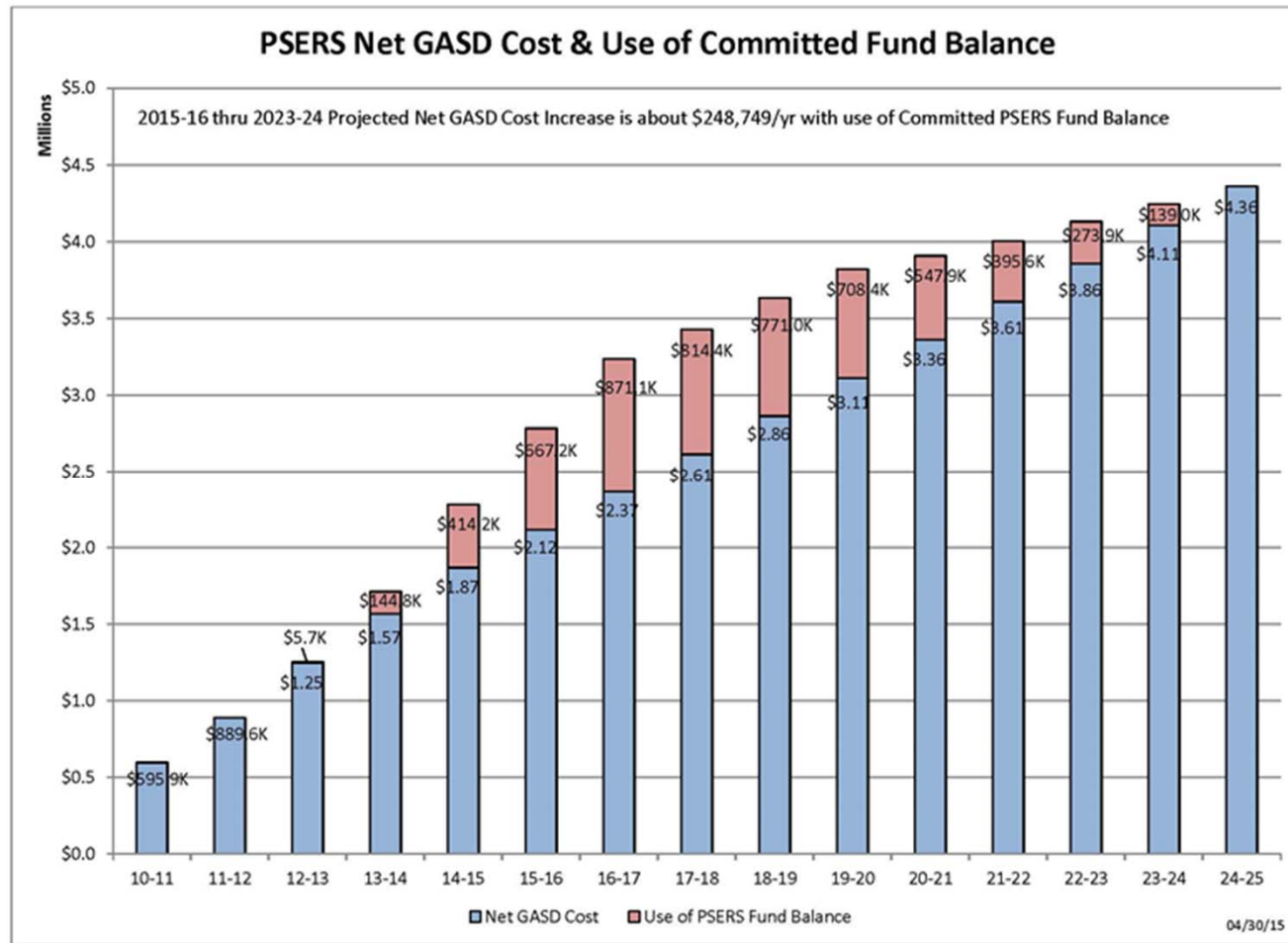
Beginning in 2003-04 GASD recognized the need to prepare for the PSERS increases and worked to establish a fund to help reduce the impact of those increases.

Through 2015-16, it is expected that \$1,387,477 from that fund will be used to reduce the need for additional taxes, and another \$4,521,300 is planned for use from 2016-17 through 2023-2024.

- The chart on the next slide shows, in pink, how the establishment and use of this fund reduces the PSERS impact to GASD taxpayers each year.



FACT – GASD PSERS Committed Fund Balance funding & use is helping control and stabilize the net yearly cost increase to the District



Questions or Comments

Call or E-mail:

Dr. Larry Redding, Superintendent of Schools

(717) 334-6254, extension 1212

lredding@gettysburg.k12.pa.us

Mr. Brad Hunt, Business Manager

(717) 334-6254, ext. 1226

bhunt@gettysburg.k12.pa.us